

Ulazni podaci - Konstrukcija

Tabela materijala

No	Naziv materijala	E[kN/m ²]	μ	γ [kN/m ³]	α [1/C]	Em[kN/m ²]	μ_m
1	Beton MB 30	3.150e+7	0.20	25.00	1.000e-5	3.150e+7	0.20

Setovi ploča

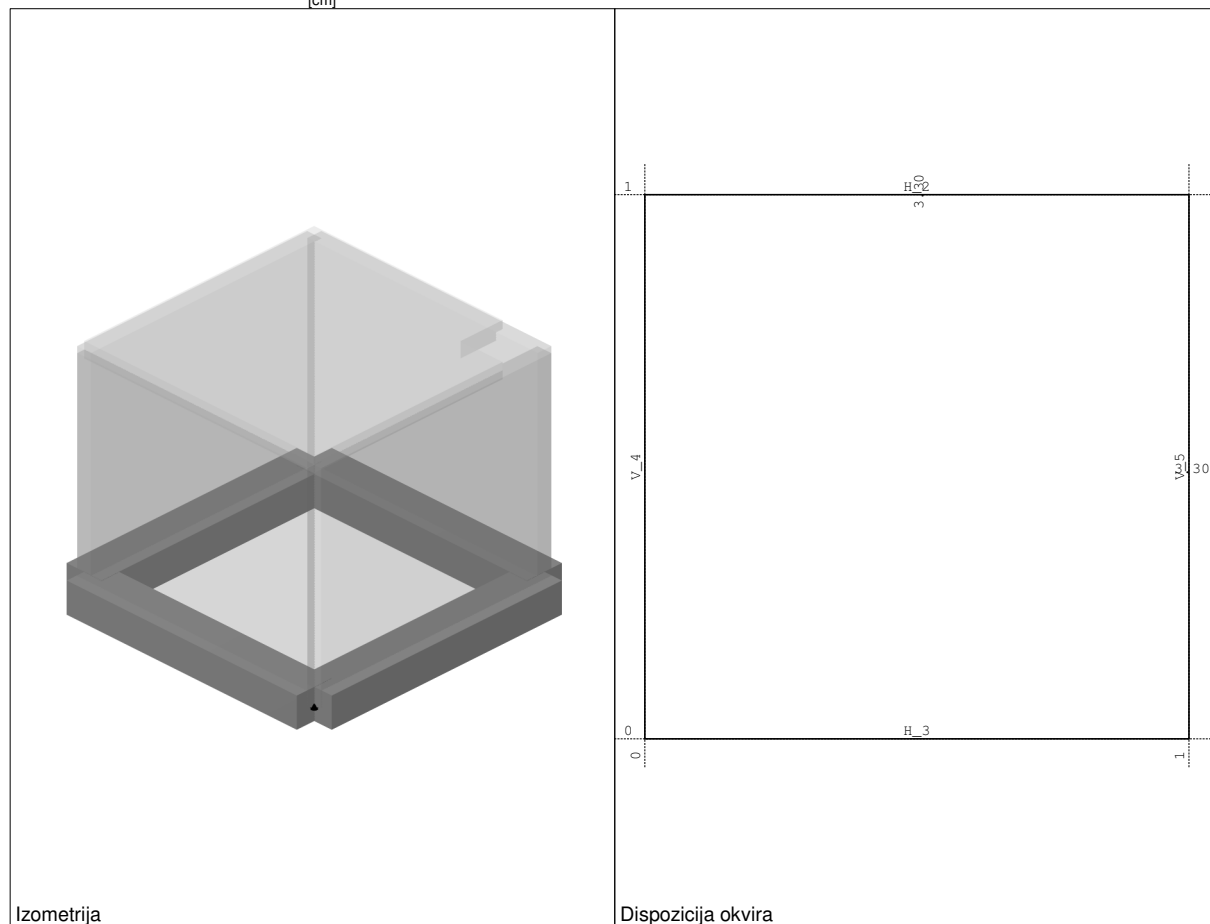
No	d[m]	e[m]	Materijal	Tip proračuna	Ortotropija	E2[kN/m ²]	G[kN/m ²]	α
<1>	0.200	0.100	1	Tanka ploča	Izotropna			
	ST: Em x 1, E x 0.01, γ x 1; SE: Em x 1, E x 1, γ x 1;							
<2>	0.200	0.100	1	Tanka ploča	Izotropna			
	ST: Em x 1, E x 0.01, γ x 1; SE: Em x 1, E x 1, γ x 1;							

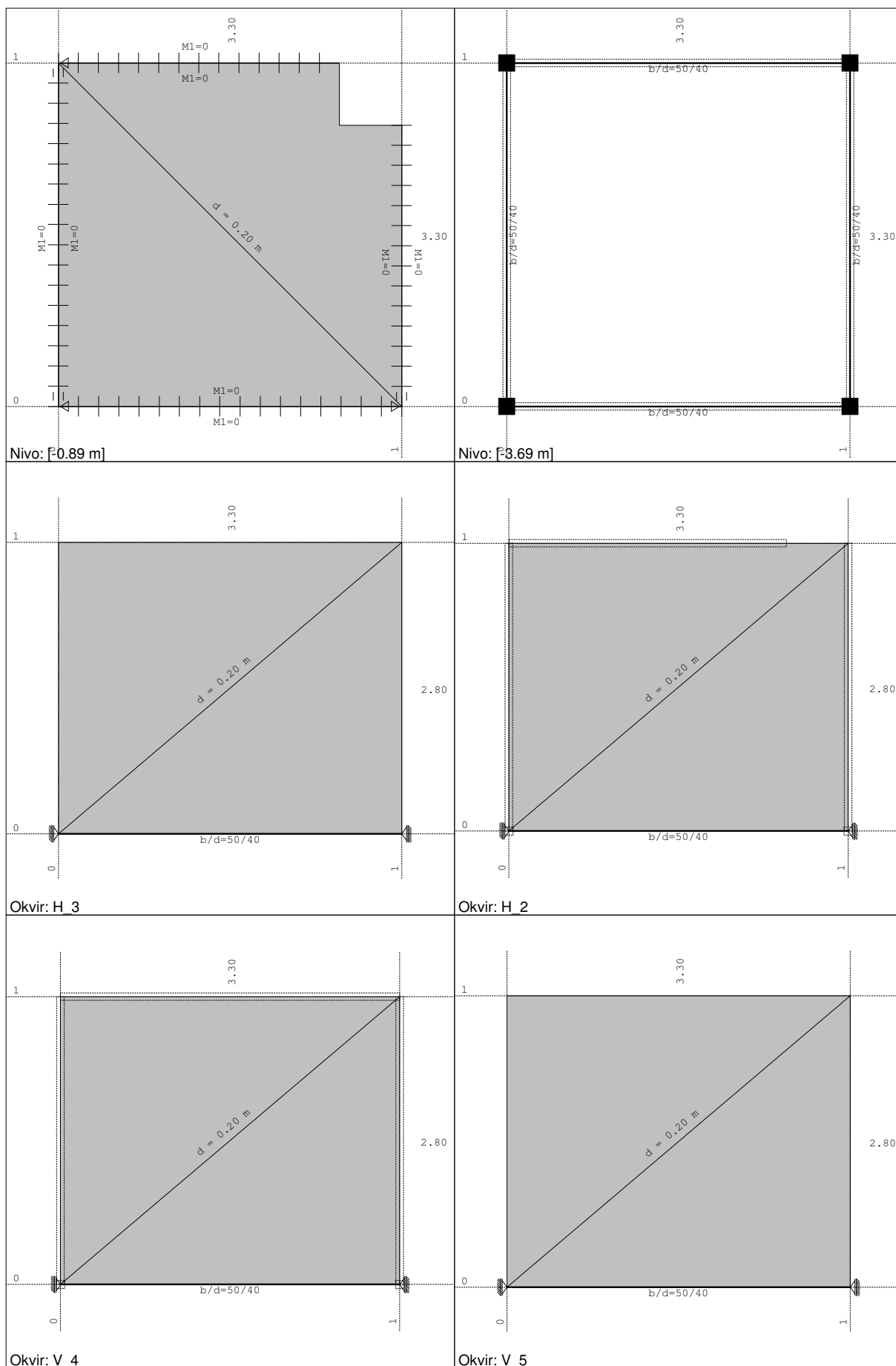
Setovi greda

Set: 1 Presjek: b/d=50/40, Fiktivna ekscentričnost

Mat.	A1	A2	A3	I1	I2	I3
1 - Beton MB 30	2.000e-1	1.667e-1	1.667e-1	5.474e-3	4.167e-3	2.667e-3

[cm]



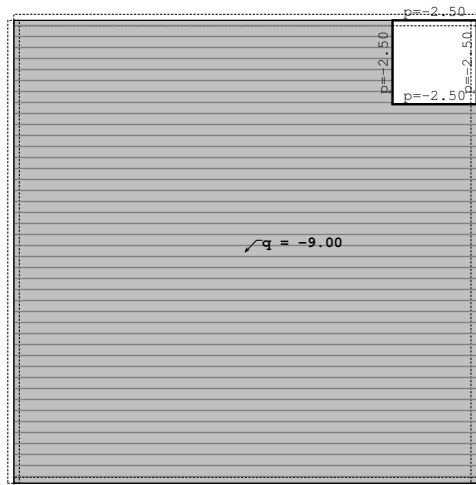


Ulazni podaci - Opterećenje

Lista slučajeva opterećenja

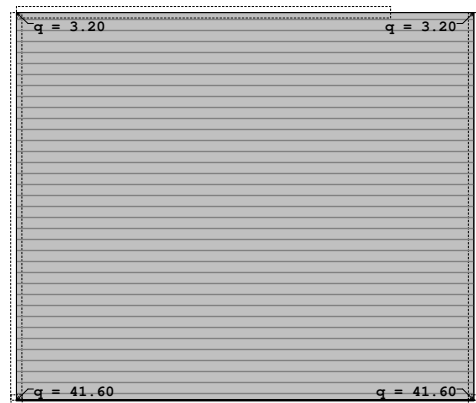
LC	Naziv	pX [kN]	pY [kN]	pZ [kN]
1	STALNO (g)	0.00	0.00	-404.22
2	TLO	0.00	0.00	0.00
3	KORISNO	-0.00	-0.00	-305.30
4	Komb.: 1.35xI+1.35xII+1.5xIII	0.00	0.00	-1003.65

Opt. 1: STALNO (g)



Nivo: [-0.89 m]

Opt. 2: TLO



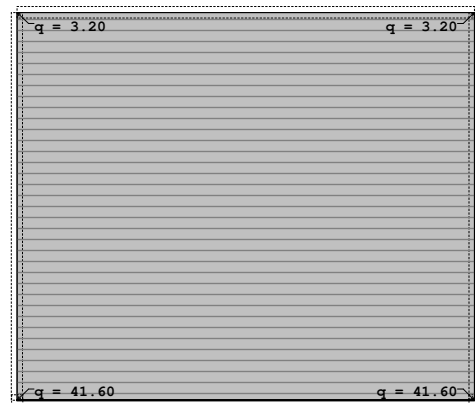
Okvir: H_2

Opt. 2: TLO



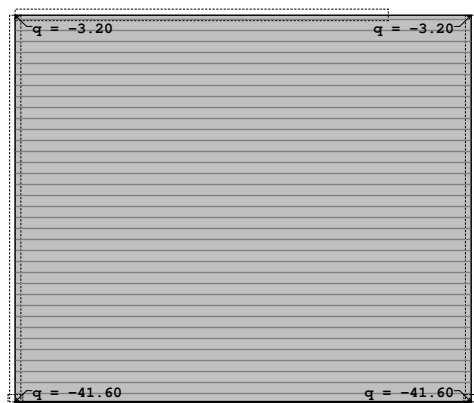
Okvir: H_3

Opt. 2: TLO

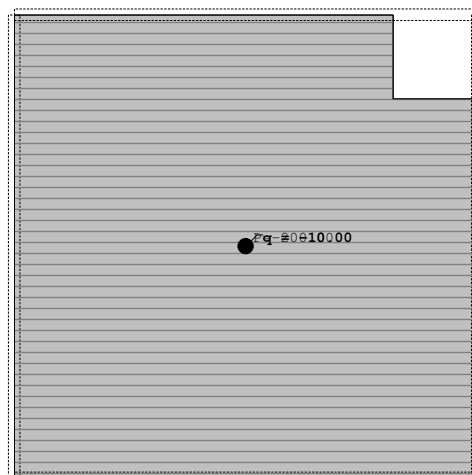


Okvir: V_4

Opt. 2: TLO

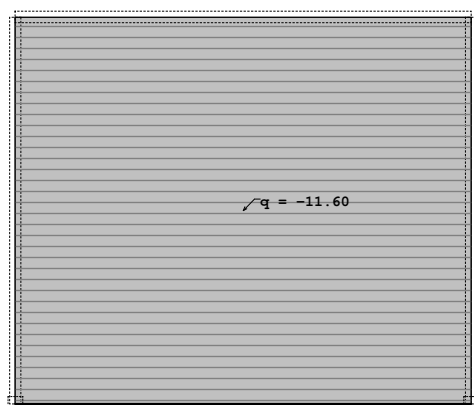


Opt. 3: KORISNO



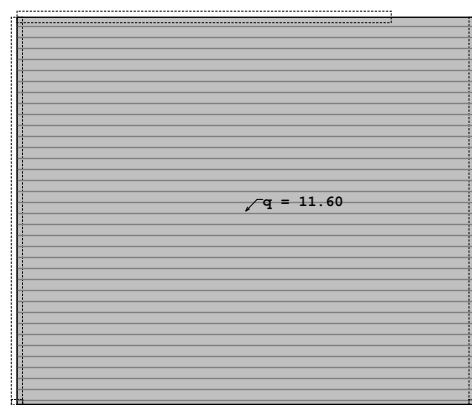
Okvir: V_5

Opt. 3: KORISNO



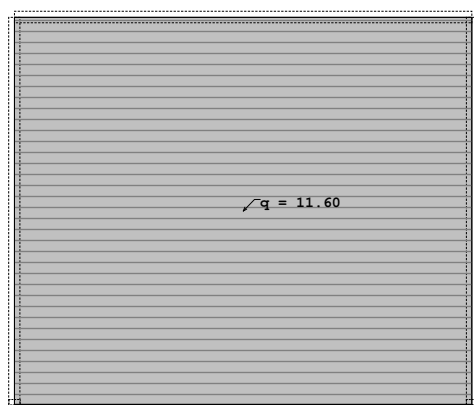
Nivo: [-0.89 m]

Opt. 3: KORISNO



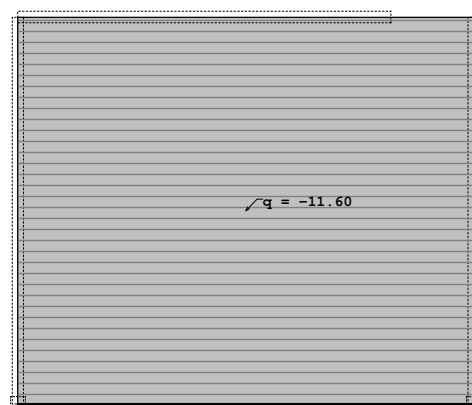
Okvir: H_3

Opt. 3: KORISNO



Okvir: H_2

Opt. 3: KORISNO

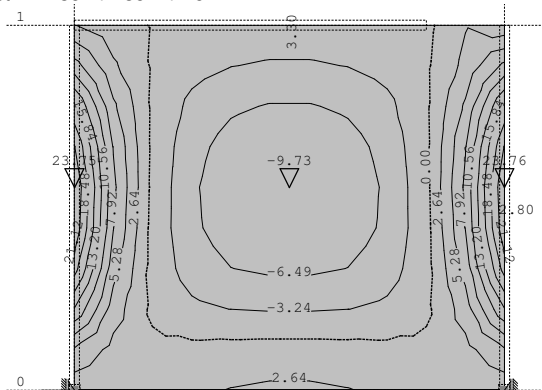


Okvir: V_4

Okvir: V_5

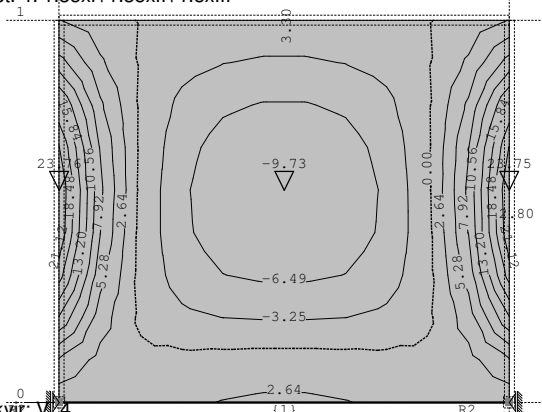
Statički proračun

Opt. 4: 1.35xI+1.35xII+1.5xIII



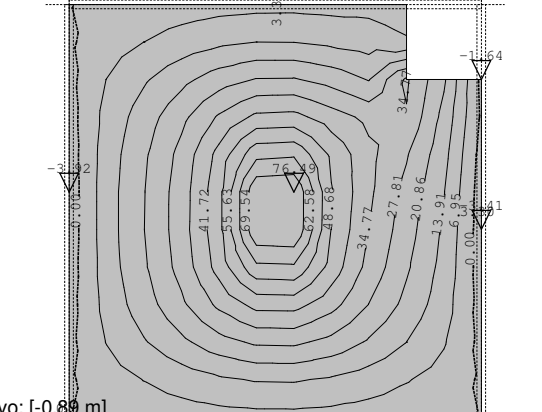
Okvir: H 2
Utjecaji u ploči: max Mx= 23.76 / min Mx= -9.73 kNm/m

Opt. 4: 1.35xI+1.35xII+1.5xIII



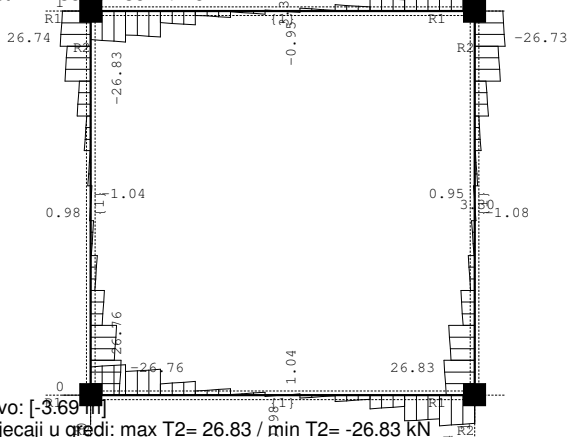
Okvir: H 2
Utjecaji u ploči: max Mx= 23.76 / min Mx= -9.73 kNm/m

Opt. 4: 1.35xI+1.35xII+1.5xIII



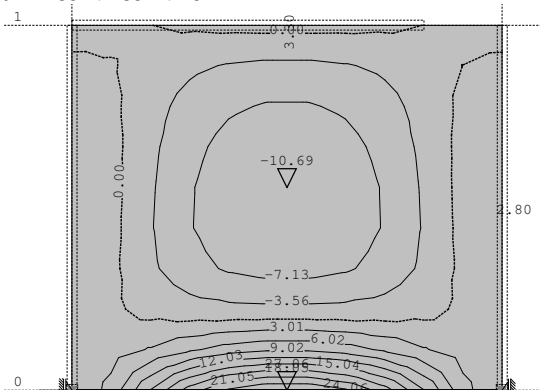
Nivo: [-0.89 m]
Utjecaji u ploči: max Mx= 76.49 / min Mx= -3.92 kNm/m

Opt. 4: 1.35xI+1.35xII+1.5xIII



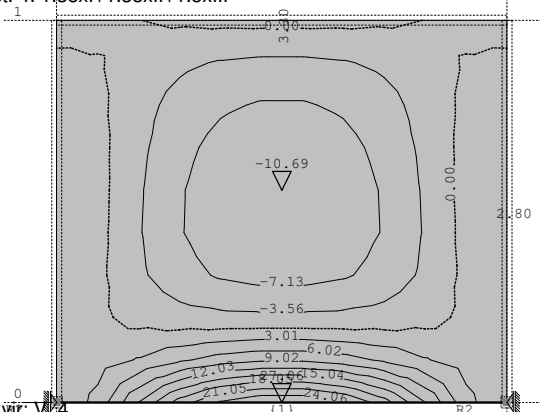
Nivo: [-3.69 m]
Utjecaji u gredi: max T2= 26.83 / min T2= -26.83 kN

Opt. 4: 1.35xI+1.35xII+1.5xIII



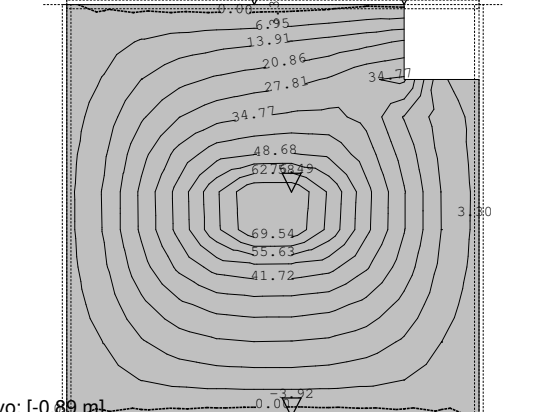
Okvir: H 2
Utjecaji u ploči: max My= 27.06 / min My= -10.69 kNm/m

Opt. 4: 1.35xI+1.35xII+1.5xIII



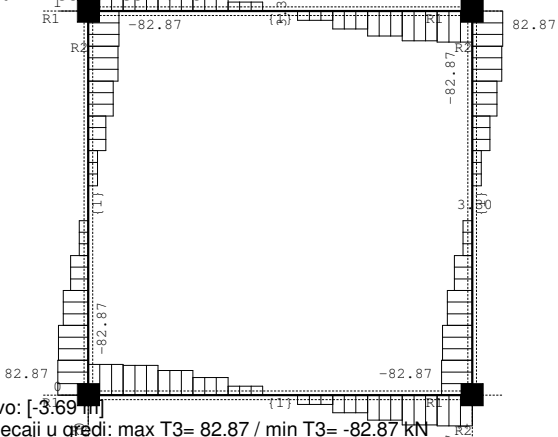
Okvir: H 2
Utjecaji u ploči: max My= 27.06 / min My= -10.69 kNm/m

Opt. 4: 1.35xI+1.35xII+1.5xIII

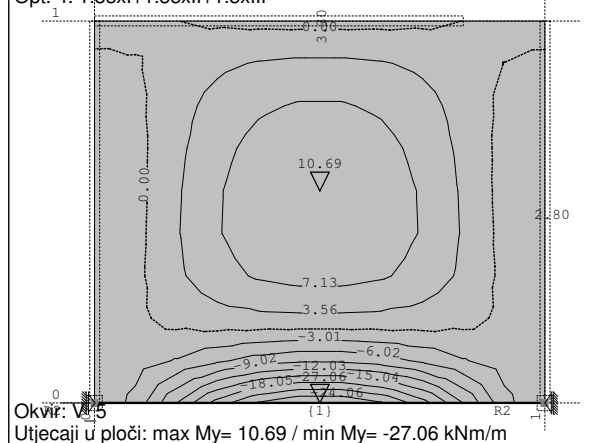
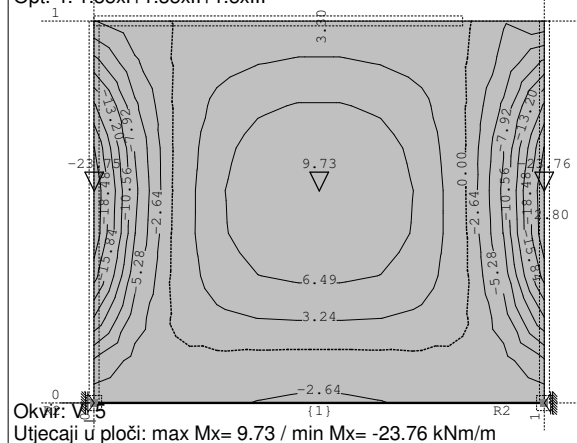
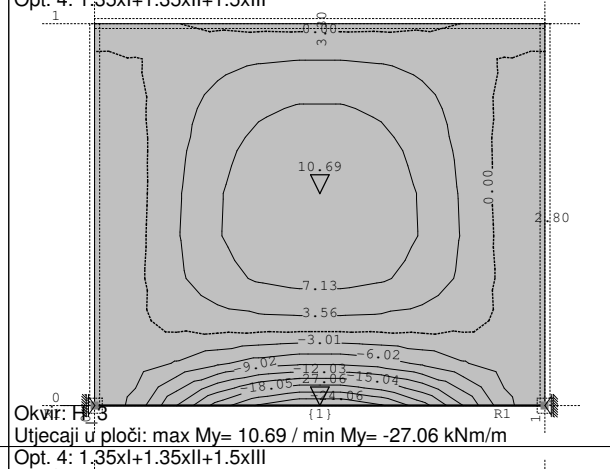
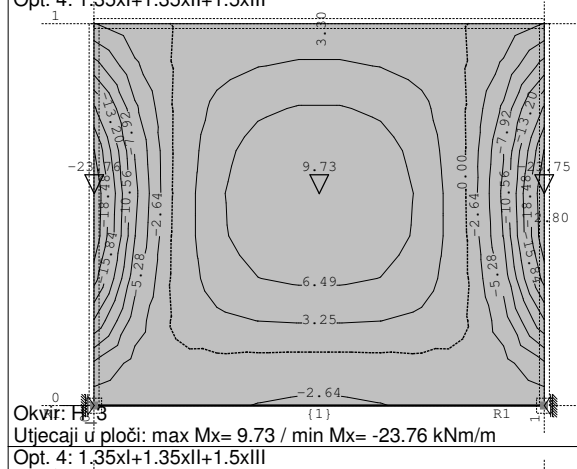
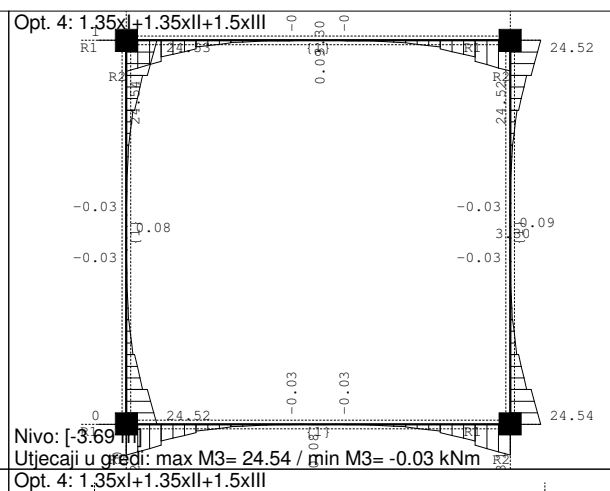
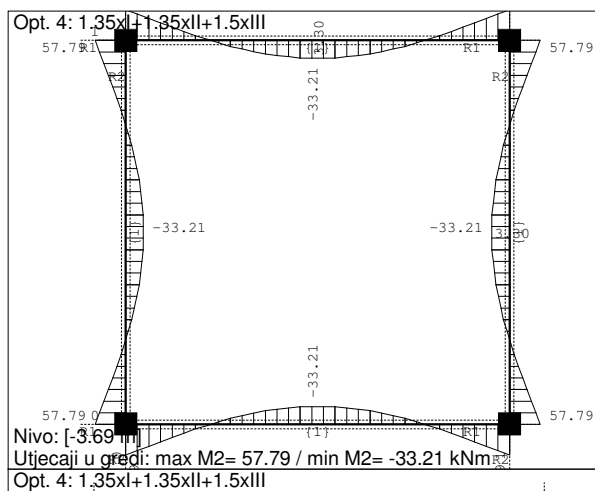


Nivo: [-0.89 m]
Utjecaji u ploči: max My= 76.49 / min My= -3.92 kNm/m

Opt. 4: 1.35xI+1.35xII+1.5xIII

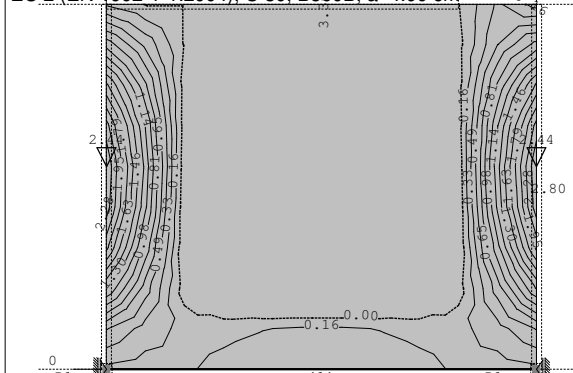


Nivo: [-3.69 m]
Utjecaji u gredi: max T3= 82.87 / min T3= -82.87 kN



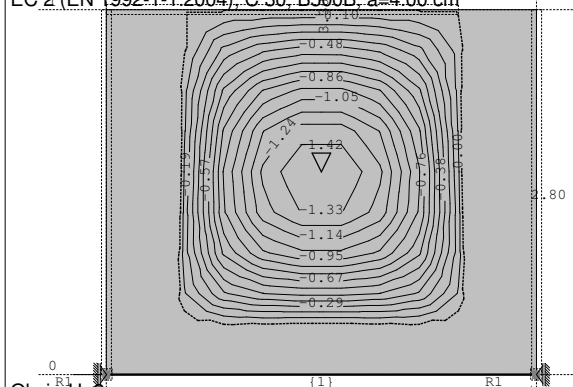
Dimenzioniranje (beton)

Mjerodavno opterećenje: 1.35xI+1.35xII+1.50xIII
EC 2 (EN 1992-1-1:2004), C 30, B500B, a=4.00 cm



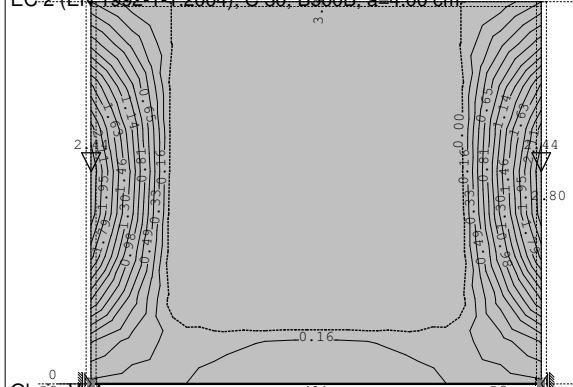
Okvir: H 2
Aa - d.zona - Pravac 1 - max Aa1,d= 2.44 cm²/m

Mjerodavno opterećenje: 1.35xI+1.35xII+1.50xIII
EC 2 (EN 1992-1-1:2004), C 30, B500B, a=4.00 cm



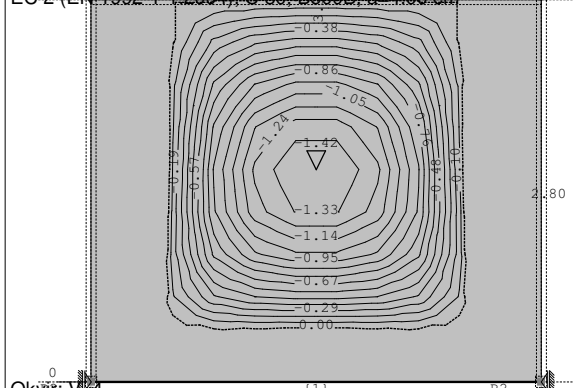
Okvir: H 2
Aa - g.zona - Pravac 1 - max Aa1,g= -1.42 cm²/m

Mjerodavno opterećenje: 1.35xI+1.35xII+1.50xIII
EC 2 (EN 1992-1-1:2004), C 30, B500B, a=4.00 cm



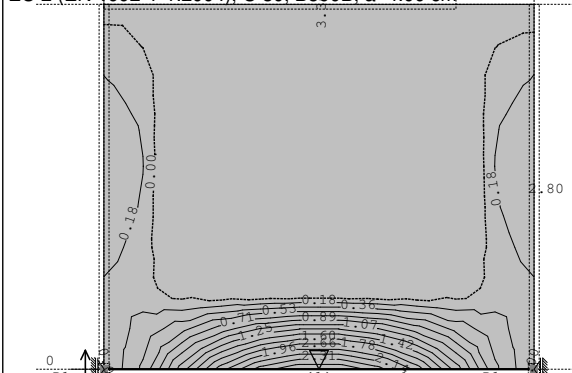
Okvir: V 4
Aa - d.zona - Pravac 1 - max Aa1,d= 2.44 cm²/m

Mjerodavno opterećenje: 1.35xI+1.35xII+1.50xIII
EC 2 (EN 1992-1-1:2004), C 30, B500B, a=4.00 cm



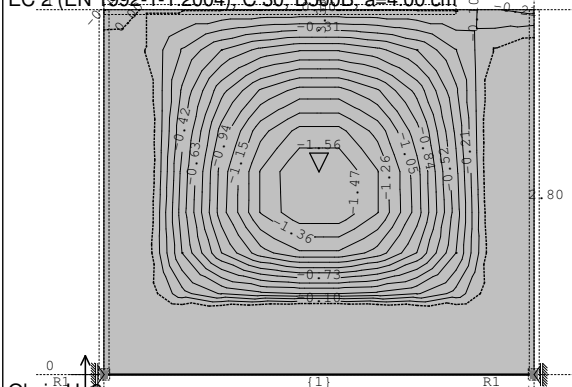
Okvir: V 4
Aa - g.zona - Pravac 1 - max Aa1,g= -1.42 cm²/m

Mjerodavno opterećenje: 1.35xI+1.35xII+1.50xIII
EC 2 (EN 1992-1-1:2004), C 30, B500B, a=4.00 cm



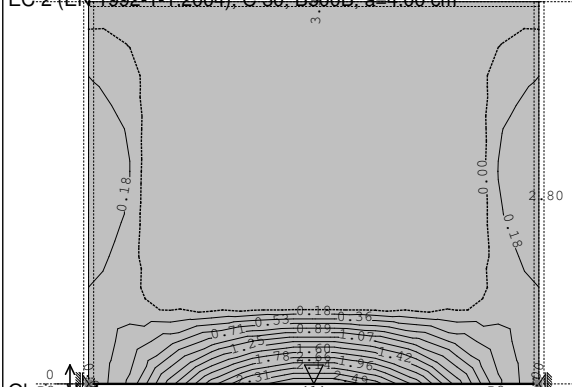
Okvir: H 2
Aa - d.zona - Pravac 2 - max Aa2,d= 2.66 cm²/m

Mjerodavno opterećenje: 1.35xI+1.35xII+1.50xIII
EC 2 (EN 1992-1-1:2004), C 30, B500B, a=4.00 cm



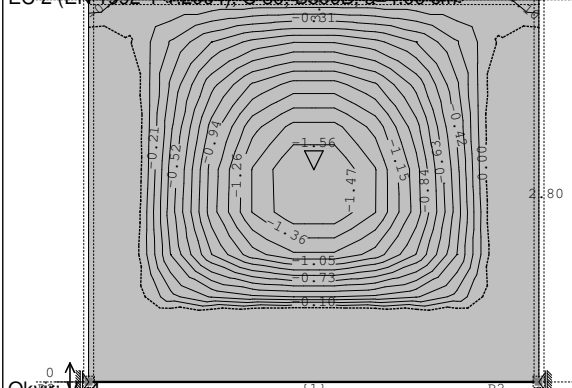
Okvir: H 2
Aa - g.zona - Pravac 2 - max Aa2,g= -1.56 cm²/m

Mjerodavno opterećenje: 1.35xI+1.35xII+1.50xIII
EC 2 (EN 1992-1-1:2004), C 30, B500B, a=4.00 cm



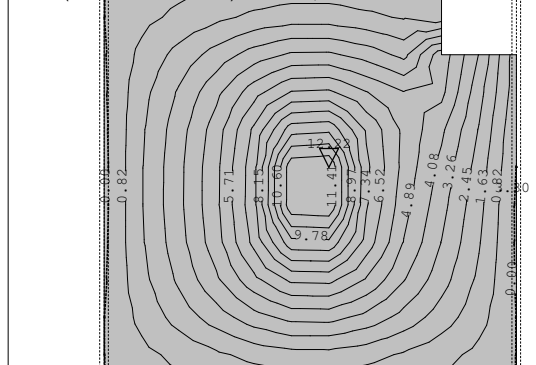
Okvir: V 4
Aa - d.zona - Pravac 2 - max Aa2,d= 2.66 cm²/m

Mjerodavno opterećenje: 1.35xI+1.35xII+1.50xIII
EC 2 (EN 1992-1-1:2004), C 30, B500B, a=4.00 cm



Okvir: V 4
Aa - g.zona - Pravac 2 - max Aa2,g= -1.56 cm²/m

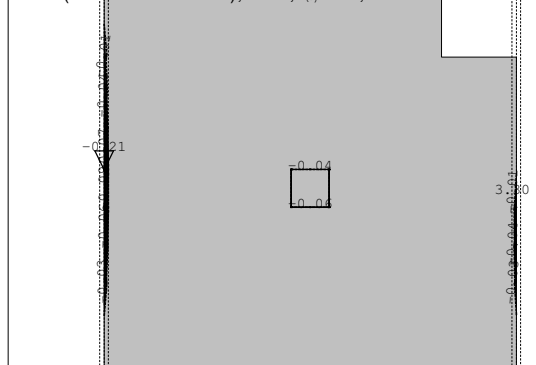
Mjerodavno opterećenje: 1.35xI+1.35xII+1.50xIII
EC 2 (EN 1992-1-1:2004), C 30, B500B, a=4.00 cm



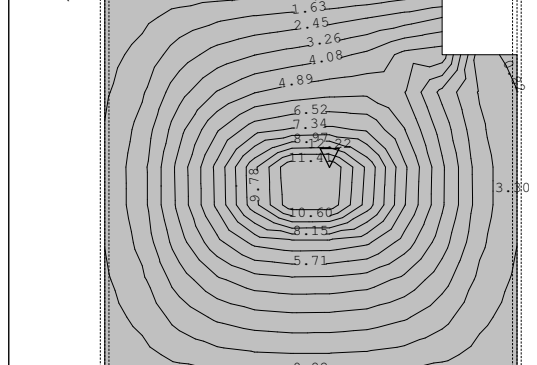
Nivo: [-0.89 m]

Aa - d.zona - Pramac 1 - max Aa1,d= 12.22 cm²/m

Mjerodavno opterećenje: 1.35xI+1.35xII+1.50xIII
EC 2 (EN 1992-1-1:2004), C 30, B500B, a=4.00 cm



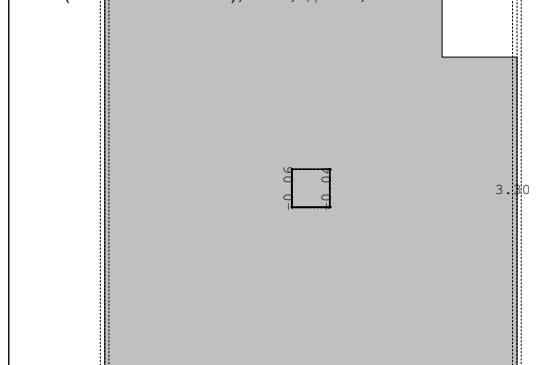
Mjerodavno opterećenje: 1.35xI+1.35xII+1.50xIII
EC 2 (EN 1992-1-1:2004), C 30, B500B, a=4.00 cm



Nivo: [-0.89 m]

Aa - d.zona - Pramac 2 - max Aa2,d= 12.22 cm²/m

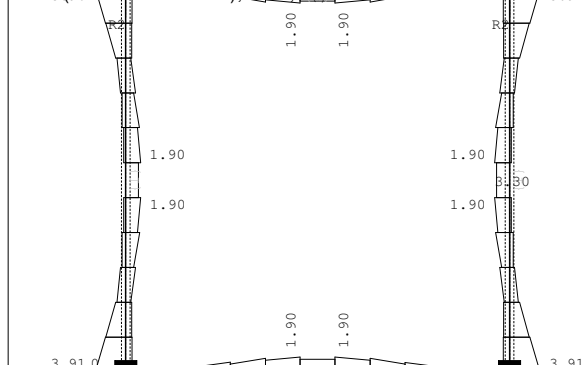
Mjerodavno opterećenje: 1.35xI+1.35xII+1.50xIII
EC 2 (EN 1992-1-1:2004), C 30, B500B, a=4.00 cm



Nivo: [-0.89 m]

Aa - g.zona - Pramac 1 - max Aa1,g= -0.21 cm²/m

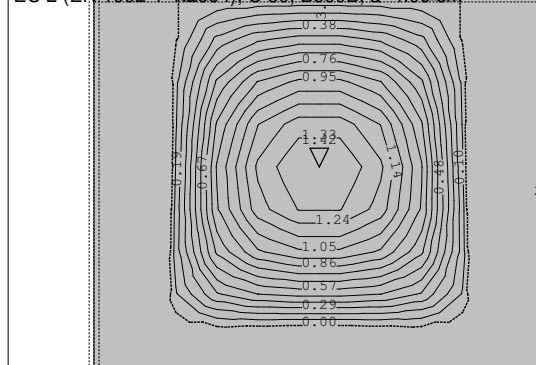
Mjerodavno opterećenje: 1.35xI+1.35xII+1.50xIII
EC 2 (EN 1992-1-1:2004), C 30, B500B



Nivo: [-3.69 m]

Armatura u gredama: max Aa3/Aa4= 1.90 / 3.92 cm²

Mjerodavno opterećenje: 1.35xI+1.35xII+1.50xIII
EC 2 (EN 1992-1-1:2004), C 30, B500B, a=4.00 cm



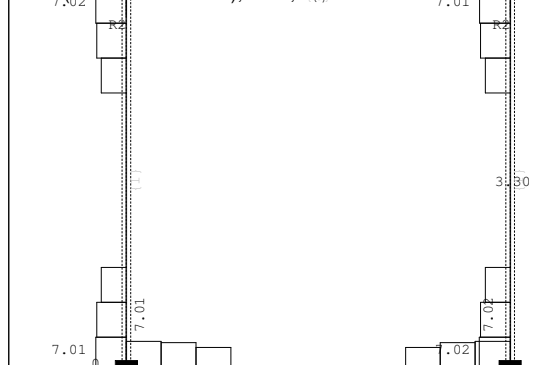
Okvir: R13

Aa - d.zona - Pramac 1 - max Aa1,d= 1.42 cm²/m

Nivo: [-0.89 m]

Aa - g.zona - Pramac 2 - max Aa2,g= -0.21 cm²/m

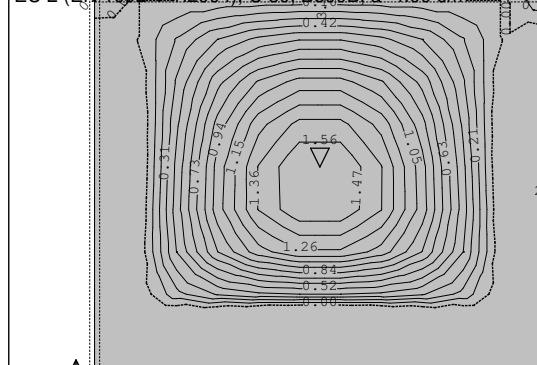
Mjerodavno opterećenje: 1.35xI+1.35xII+1.50xIII
EC 2 (EN 1992-1-1:2004), C 30, B500B



Nivo: [-3.69 m]

Armatura u gredama: max Asw= 7.02 cm²

Mjerodavno opterećenje: 1.35xI+1.35xII+1.50xIII
EC 2 (EN 1992-1-1:2004), C 30, B500B, a=4.00 cm



Okvir: R13

Aa - d.zona - Pramac 2 - max Aa2,d= 1.56 cm²/m

